

Comby

Precision combined
with freedom



DOT PEEN TECHNOLOGY



STATION & PORTABLE USE



CONTROLLED BY TABLET




CONNECT.series®

TECHNOmark®
— smart traceability

BENCHTOP MODE

Precision with simplicity

 MARKING OF SMALL TO MEDIUM-SIZED PARTS UP TO 295 MM HIGH

All-in-one column base

- Easy, precise positioning thanks to the adjustment wheel
- Ergonomic base for mounting multiple clamping systems on universal T slots
- Compact: easy installation on a workbench

Robustness and stability

- Cast aluminium base and steel column
- Marking head with protective bumpers and technical plastic shell
- Weight of column base: 11 kg

Marking window

120 x 60 mm

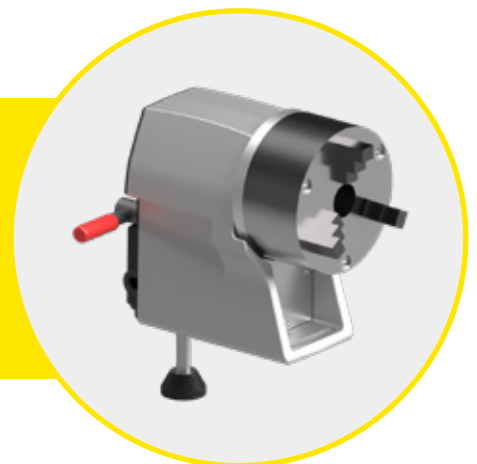


Intelligent Driving Impact (IDI)

Unique function automatically adjusts distance between part and stylus during marking enabling marking over uneven surfaces from 3-8 mm in height.

Connect.series D-axis

- Marking on the circumference and indexing around cylindrical parts
- Compatible with 120D marking head
- Exclusively available on tablet for optimal setting comfort



DRIVING SOFTWARE

On-board performance



Controlled by tablet*

with an application developed by Technomark

- Landscape mode display
- Creation and modification of marking files
- Import of marking files and logos from a PC
- Visualization of the marking area on the screen
- 2 levels of use:
 - **administrator mode** to create marking files
 - **production mode** for opening & filling pre-configured files
- Maintenance module
- Error display

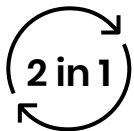
*Connect.App application also available on smartphone. Tablet not included.



Intuitive and easy to use



Portable control unit



2 in 1 machine

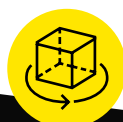
Switch from a portable to a benchtop mode in less than 10s



Lightweight marking head: 3.2 kg



360° use of the machine



Illuminated marking area



Licence pack

- **« Datamatrix » licence**
Generation and marking of 2D codes
- **Logo licence**
Insertion and marking of logos
- **« Font creator » licence**
Creation of custom fonts
- **Scan licence**
2D code scanning (using the tablet's camera)

APPLICATION



Compatible with Android 10+

CONNECT.series®

Patented machines



Wireless communication

between the marking head and the tablet

within 10 m



SECURE WIFI PROTOCOL



FREEDOM OF MOVEMENT



INDOOR AND OUTDOOR MARKING



PAIRING OF HEADS THROUGH THEIR SERIAL NUMBERS



PORTABLE MODE

Traceability in motion



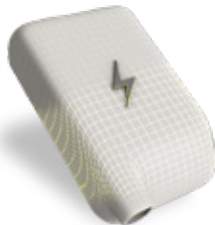
MARKING MEDIUM TO LARGE PARTS
HEAVY OR DIFFICULT TO ACCESS



Energy self-sufficient

22V lithium ion battery integrated in head

- Sufficient battery life for one day of marking
- Specific battery design for better electronics, autonomy and software combination
- Lightweight, performance and durability guaranteed



Support foot 5 in 1

1. Non-slip-foot
2. Magnetic support with magnets
3. Marking on flat parts
4. Marking on small and large cylinders with two pairs of locating V's
5. Positioning support with support guide



Storage dock

- Head support with workbench mounting option
- Stylus, springs and support guide storage
- Maintenance: checking the condition of the spring and the sharpening angle of the stylus

OUR ADDED VALUE

Long-term support

Pre-sale



FEASIBILITY
STUDY



SAMPLES
MARKING



ON-SITE
TESTING



CUSTOMIZATION

After sales



HELPLINE



TRAINING



SERVICE AND
MAINTENANCE CONTRACT



REPAIR



LOAN OF EQUIPMENT

TECHNOmark[®]
smart traceability



1, allée du développement
42350 La Talaudière - France
+33 (0)4 77 22 25 91
info@technomark-marking.com

www.technomark-marking.com



47 countries

WORLDWIDE PRESENCE THROUGH OUR
DISTRIBUTORS AND 3 SUBSIDIARIES

99%

AVERAGE CUSTOMER SATISFACTION
RATE OVER 3 YEARS

22 500

YELLOW MACHINES IN SERVICE
WORLDWIDE, ALL TECHNOLOGIES

10%

OF TURNOVER DEDICATED TO R&D

